

Poster Number: EP119. Name: Poojamol T J
**Title: MULTIPLE PRIMARY CANCER INVOLVING
 ENDOMETRIUM AND BREAST- A RARE CASE REPORT**

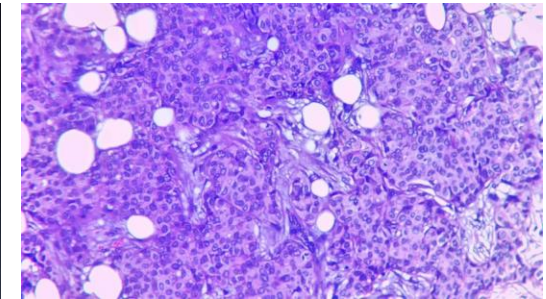
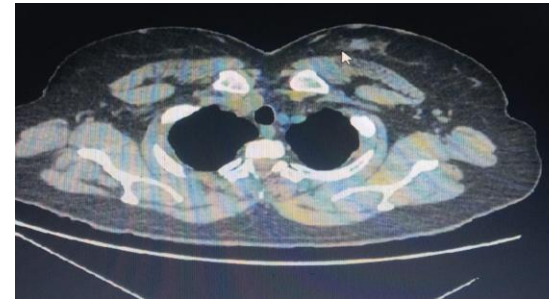
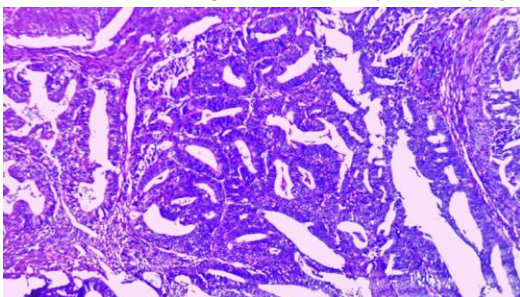
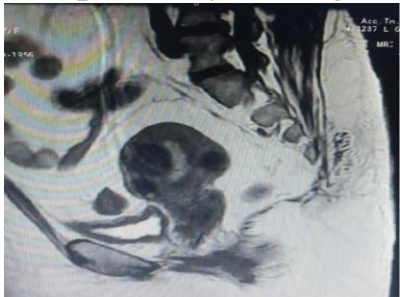


INTRODUCTION

Multiple primary malignancy is the primary malignancy with different histology to two or more distinct parts of the body. Among them double primary cancer is the most common. They are synchronous when new malignancy is diagnosed within 6 months and metachronous when diagnosed after 6 months.

CASE REPORT

68 year old parous lady presented with history of left breast lump, evaluated and found to have invasive breast carcinoma non specific type [ER(+), PR(+), HER 2 (0), Ki-16 (19%)] in Ultrasound guided truecut biopsy and adenocarcinoma in endometrial sampling. She underwent Breast conservative surgery wide excision of left breast lump + matrix rotation oncoplasty + sentinel lymph node biopsy for breast -Intraoperatively solitary left breast lump 3x2cm at 10'O clock position in superior inner quadrant. Modified radical hysterectomy + bilateral pelvic + para aortic lymph node dissection for carcinoma endometrium- Intraoperatively uterus measured 9x8x6cm, bilateral ovaries and tubes normal. Histopathology came as Invasive breast carcinoma, NST grade 2, pT1cN0 and adenocarcinoma endometrium, endometrioid type FIGO grade 2. Postoperatively locoregional EBRT and vaginal brachytherapy given.



DISCUSSION

The possibility of synchronous endometrial and breast cancer in a single person is very much low with an incidence less than 0.5%. This association may be because of the common etiologies like genetic predisposition, hormonal risk factors or treatment related factors.

CONCLUSION

Synchronous breast and endometrial cancer should be managed under a multidisciplinary team. surgery for breast and endometrial cancer improves local control and survival and increases the chance of curability. In case of endometrial cancer radiotherapy and brachytherapy increases the local control and prognosis and complete response

REFERENCE

1. Bani- Mostafavi ES, Tayebi M and Montazer F. Case report: Synchronous primary malignancy including the breast and endometrium. F1000Research. 2018, 6:1502
- 2.P. Tsekeris, S. Dimou: Synchronous endometrial carcinosarcoma and breast carcinoma: a case report. Eur.J.Gynaec.Oncol.- ISSN. 2000, XXI, n.3,0392-2936